

回收

RECYCLE

RECICLAR

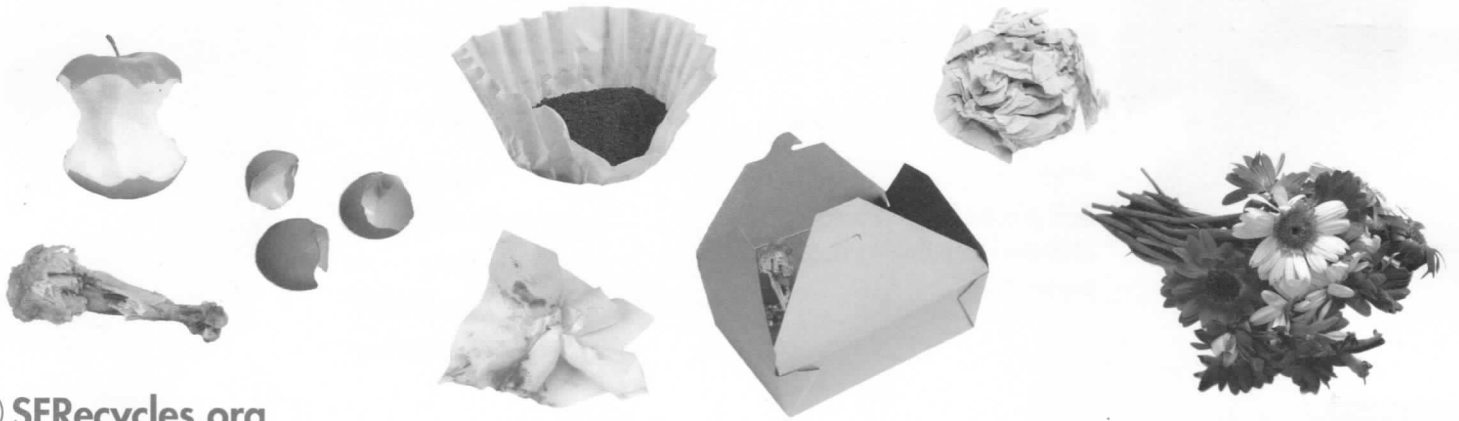


SFRcycles.org

堆肥

COMPOST

COMPOSTAR



SFRcycles.org

填埋區

LANDFILL

BASURERO



SFRcycles.org

San Francisco is invested in conserving our natural resources by providing a convenient system for collecting as much compostable and recyclable material as possible. In fact, it's the law. The **Mandatory Recycling and Composting Ordinance** (City Ordinance No. 100-09) states: "All persons in San Francisco must separate their refuse into recyclables, compostables and trash".

For this reason, we're making changes to your recycling program so that more material can go in your recycling bin.

 [SFRecycles.org](http://SFRecycles.org)



**SF Environment**  
Our home. Our city. Our planet.  
A Department of the City and County of San Francisco



**RECYCLE**

You can now put these **NEW** items in your blue bin:

- Empty paper cups, such as coffee cups
- Empty paper milk cartons
- Juice boxes
- Soft plastic bags & wrap collected together in a plastic bag

**COMPOST**

Please continue putting the following items in your green bin:

- Food Scraps
- Paper to-go containers
- Dirty paper
- Products marked "compostable"
- Yard trimmings



**LANDFILL**

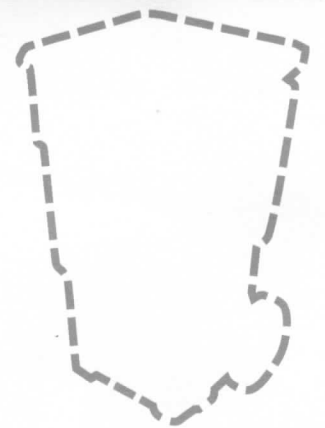
Only a few items belong in the black bin:

- Diapers
- Toothpaste tubes
- Potato chip bags, candy bar wrappers
- Menstrual products
- Pet poop, pet litter
- Condiment packets

**NO BIN**

Some items do not belong in any bin:

- Batteries
- Household chemicals
- Paint
- Medicine
- Electronics
- Fluorescent light bulbs
- Used motor oil
- Bulky items



For more information contact [customerservice@recologysf.com](mailto:customerservice@recologysf.com) or call (415) 330-1300